

5B6

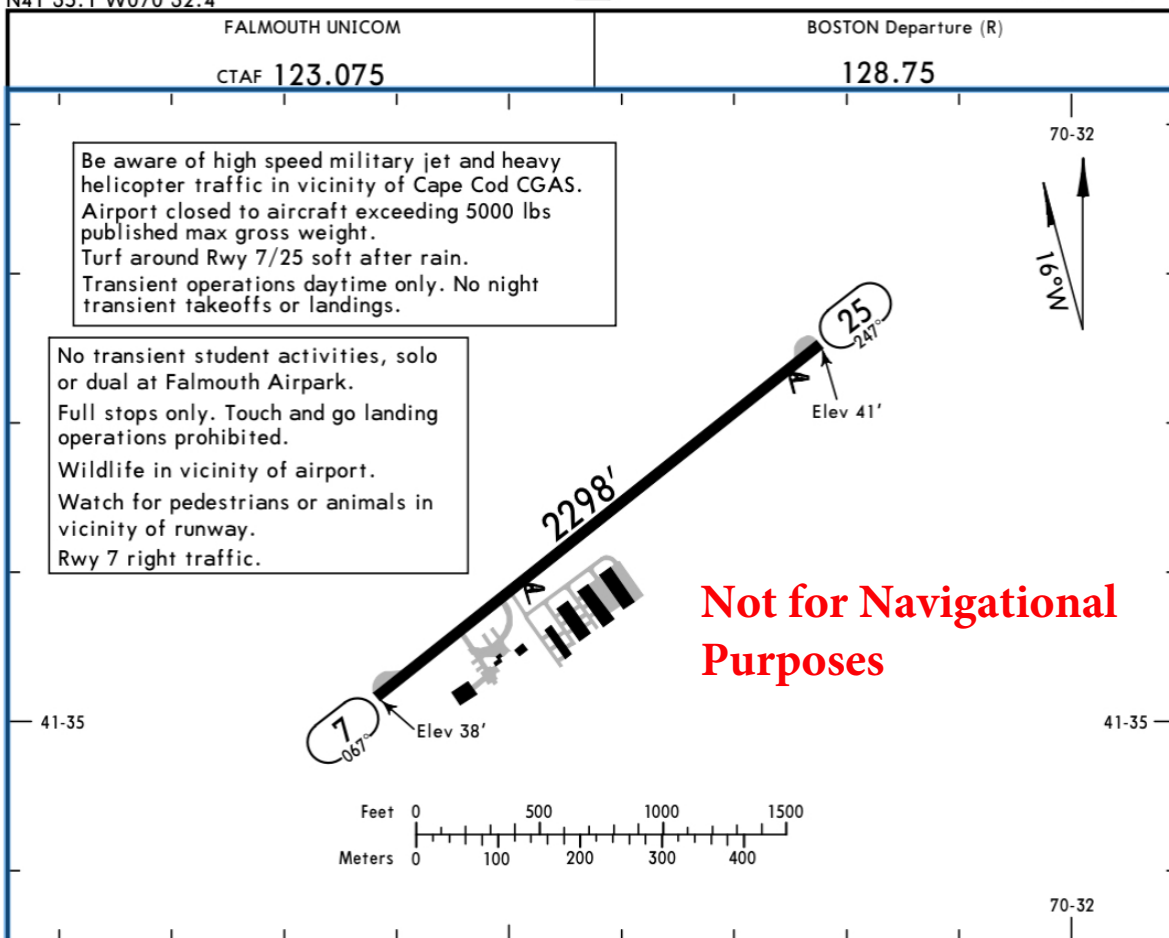
Apt Elev 41'  
N41 35.1 W070 32.4

JEPPesen

8 JUL 22 (40-9) Eff 14 Jul

FALMOUTH, MASS

FALMOUTH



## ADDITIONAL RUNWAY INFORMATION

RWY			USABLE LENGTHS		TAKE-OFF	WIDTH
			Threshold	Glide Slope		
7	25	① LIRL				40'

① Activate lights with 5 clicks on 122.7.

TAKE-OFF						FOR FILING AS ALTERNATE	
Rwy 7			Rwy 25				
Adequate Vis Ref	STD	With Min climb of 235'/NM to 700'		For Visual Climb Over Airport			
		Adequate Vis Ref	STD				
1 & 2 Eng	1/4	1	1/4	1	1000-3	A	NA
3 & 4 Eng		1/2		1/2		B	
						C	
						D	

VISUAL CLIMB OVER AIRPORT (VCOA): Obtain ATC approval for VCOA when requesting IFR clearance. Climb in visual conditions to cross Falmouth Airpark at or above 800' before proceeding on course.

TAKE-OFF OBSTACLE NOTES: Rwy 7, multiple trees 64' from DER, 458' right of centerline, 80' AGL/133' MSL. Multiple trees beginning 76' from DER, 30' right of centerline, up to 80' AGL/140' MSL. Multiple trees 87' from DER, 300' left of centerline, 80' AGL/133' MSL. Multiple trees beginning 265' from DER, 16' left of centerline, up to 80' AGL/136' MSL. Multiple trees beginning 1902' from DER, 18' left of centerline, up to 80' AGL/140' MSL. Multiple trees beginning 2080' from DER, 28' right of centerline, up to 80' AGL/143' MSL. Multiple trees beginning 2270' from DER, 19' left of centerline, up to 80' AGL/143' MSL. Multiple trees beginning 3573' from DER, 115' left of centerline, up to 80' AGL/146' MSL.

Rwy 25, tree 10' from DER, 217' right of centerline, 80' AGL/119' MSL. Multiple trees beginning 166' from DER, 6' right of centerline, up to 80' AGL/123' MSL. Multiple trees beginning 188' from DER, 81' left of centerline, up to 80' AGL/113' MSL. Tree 230' from DER, 550' right of centerline, 80' AGL/129' MSL. Multiple trees beginning 344' from DER, 12' right of centerline, up to 80' AGL/136' MSL. Multiple trees beginning 912' from DER, 34' left of centerline, up to 80' AGL/120' MSL.